

HD15 Sensor

Low Frequency

Miniature Acoustic Emission Sensor

Description and Features

The HD15 is a very small Acoustic Emission sensor that is built within a Hex 6-32 threaded standoff for easy mounting. Offering low frequency and high sensitivity AE response, it comes standard with an 8-inch integral cable and choice of BNC or SMA connector.

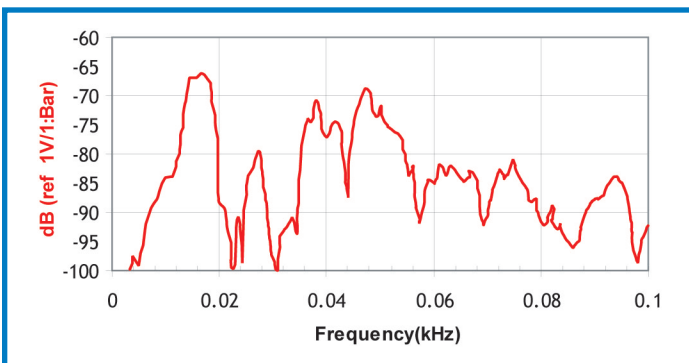
Applications



PAC's HD15 Sensor, along with the AE5A Wide Bandwidth AE Amplifier

This miniature sensor is ideal for any application that requires a small, low frequency and threaded AE

sensor mounting. It is especially useful where there is little room for sensor mounting.



Frequency response of the HD15. Calibration based on ASTM E976.

Operating Specifications

Dynamic

Peak Sensitivity, Ref V/ μ bar	-66 dB
Operating Frequency Range	130 - 530 kHz
Resonant Freq. V/(m/s); [V/ μ bar]	150 kHz
Directionality.....	N/A

Environmental

Temperature Range	-65 to 125°C
Shock Limit	500 g
Completely shielded crystal for maximum RFI/EMI immunity	

Physical

Dimensions.....	0.313" diameter x .375" body height
.....	0.18 thread height with 6-32 thread
.....	(8 x 9.5 mm, 4.5 mm thread height with 6-32 thread)
Weight.....	3 grams (6 grams with cable & connector)
Case Material.....	Stainless Steel
Connector.....	BNC, SMA on Integral Cable
Connector Locations
.....Top Exit Coax, .05" diameter and 8" long
Seal	Epoxy

Ordering Information and Accessories

HD15	HD15
Preamplifier.....	0/2/4, 2/4/6
Preamp to System Cable (specify length in meters)	1234 - X
Amplifier Subsystems.....	AE2A or AE5A

Sensors include

NIST Calibration Certificate & Warranty